



GMT Constitutional Area 6, Group P

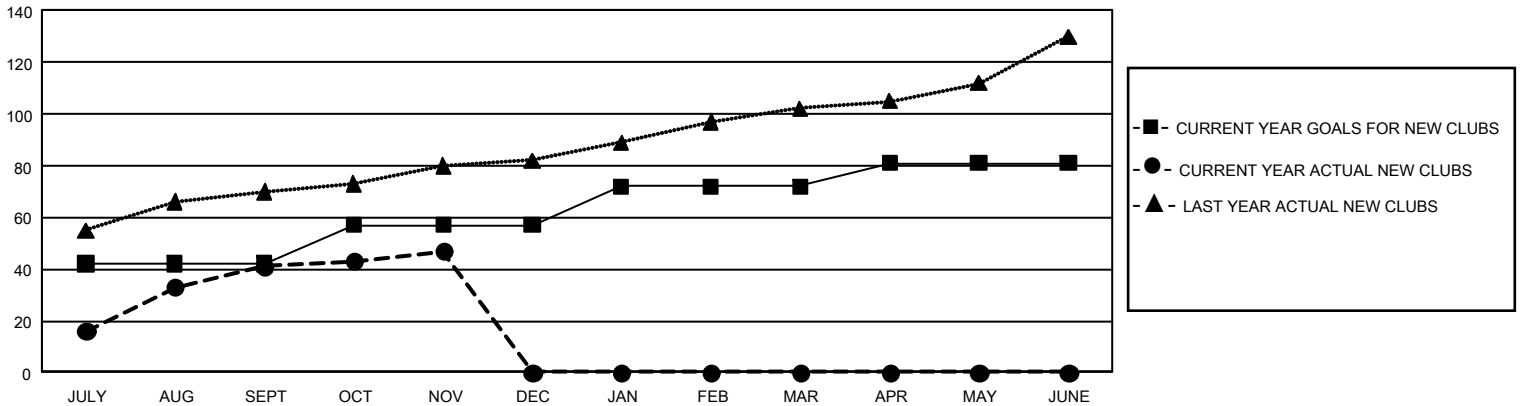
GMT: OPEN

REPORT DOES NOT INCLUDE CLUBS IN UNDISTRICTED AREAS.

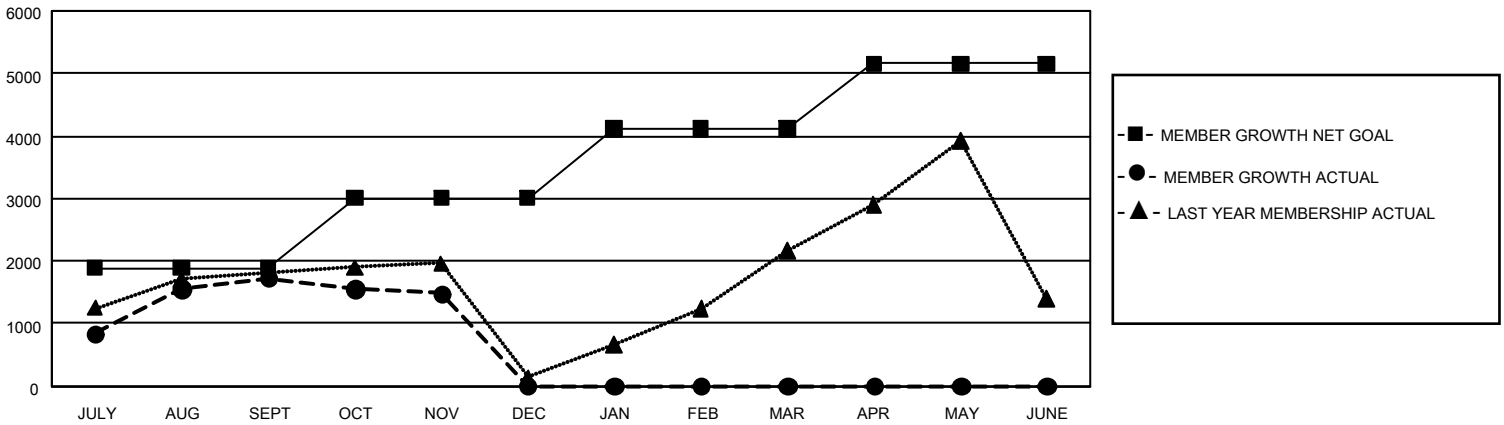
Clubs			
RESULTS FOR 2019-2020			
QUARTER	NEW CLUB GOAL	NEW CLUBS	DROPPED CLUBS
JULY/AUG/SEPT	126	41	7
OCT/NOV/DEC	45	6	4
JAN/FEB/MAR	45	0	0
APR/MAY/JUNE	27	0	0

Members			
RESULTS FOR 2019-2020			
QUARTER	MEMBER GROWTH NET GOAL	MEMBER GROWTH ACTUAL	DROPPED MEMBERS ACTUAL (including transfers)
JULY/AUG/SEPT	5,670	3,482	1,497
OCT/NOV/DEC	3,345	880	971
JAN/FEB/MAR	3,345	0	0
APR/MAY/JUNE	3,120	0	0

GOALS AND ACTUAL NEW CLUBS CUMULATIVE



GOALS AND ACTUAL MEMBERS CUMULATIVE



DROPPED CLUBS: 11	687 CLUBS OF 1,579 ADDED 1 OR MORE NEW MEMBERS	<u>GENDER DISTRIBUTION</u>	
<u>DROPPED MEMBERS</u>		MALE	53,226 (77.32%)
DECEASED	60	FEMALE	15,613 (22.68%)
CLUB CANCELLED	393	TOTAL FAMILY UNIT MEMBERS 27,970	
OTHER	2,013	FAMILY MEMBERS PAYING HALF DUES 17,302	
TOTAL	2,466		

[CLICK HERE FOR CUMULATIVE MEMBERSHIP DATA](#)